



FOR SUCH A TIME...

*You are unique
among college
graduates around
this country because
you have committed to
do justice and to love
mercy and to walk
humbly with God,
and I just believe that
we've never needed
people to take seriously
that commitment more
than we do today.*

BRYAN STEVENSON,
renowned civil rights attorney,
2022 Commencement speaker,
recipient of honorary doctorate



FROM THE PRESIDENT

FOR SUCH A TIME AS THIS

SUSAN SCHULTZ HUXMAN, PHD

Greetings friends of EMU,

We've all seen it: News headlines proclaim that "unprecedented disruptions" are the hallmarks of our time. Consider a pandemic that doesn't want to let go of us and has transformed work as we know it; a growing existential threat around ever more climate emergencies; rumors of (un)civil war from the Jan 6 storming of the capitol and its continued investigation; and Russia's invasion of Ukraine. Those are just a few of the crises threatening civil society.

A clever t-shirt about our circumstances says it best: "I miss precedented times." In the midst of these swirling challenges, our campus community (both internal and external stakeholders) continues to exhibit grace and courage in our witness as a faith-infused peace and justice university.

This report highlights many remarkable examples of this witness. Our key indicators of institutional health are strong as we "prepare students to serve and lead" in the spirit of Micah 6:8.

The campus response to our extraordinary times reminds me of the story of Esther.

Many of you have heard the expression "For such a time as this" – a question posed by Queen Esther's cousin Mordecai (Esther 4:14). Esther's story is dramatic and as high stakes as it gets.

Esther is an unlikely hero: She is an orphan selected as queen for her beauty who kept her Jewish heritage secret. Esther's crisis is dire: confronting the king with the secret plan of one of his captains to rid the kingdom of all Jews could mean losing her life, but not confronting the king could mean the destruction of her family and her people. Esther had to be extraordinarily brave. She risked her life for a greater purpose. Esther's story reminds us that we can be thrust without warning into making difficult decisions. Courageous actions sometimes mean forging a difficult path that can make all the difference.

The most memorable phrase from this story comes from Mordecai. "Perhaps you have come to royal dignity for just such a time as this," he says to Esther. This could be true for any one of us. Replace "royal dignity" with something else: Perhaps you have come to EMU for such a time as this? Perhaps you are equipped to assist EMU for such a time as this?

Though certainly we can agree that the stakes are not as high as those faced by Esther, the lesson is no less valuable. Crises can force us to dig deep into our reserves and ask: What special gifts do I carry for this moment? Do I have the resolve to risk what it may take to affect positive change?

*What
special gifts do I
carry for this moment?
Do I have the resolve to
risk what it may take
to affect positive
change?*



I suggest that for EMU this is our moment, our time:

- A time to embrace the promise of a new school year;
- A time to pursue our fiercely student-centered strategic plan for 2023-28;
- A time to launch the bold second phase of our Forward Together Campaign;
- A time to attract tomorrow's student leaders whom we will well equip to engage our "unprecedented disruptions."

To that end, we covet your prayers, your counsel, and your generous support.

Can we continue to count on you? For such a time as this?

In gratitude,

A TIME TO...
*embrace the promise of a
new school year*

A TIME TO...
*pursue our fiercely student-
centered strategic plan*

A TIME TO...
*launch the bold second phase
of our Forward Together
campaign*

A TIME TO...
*attract tomorrow's student
leaders whom we will
well-equip to engage our
"unprecedented disruptions"*

RECOGNITION HIGHLIGHTS



Professor **David Berry** joined as a member of the Gateways Music Festival Orchestra, comprised of musicians of African descent, for its historic house debut at Carnegie Hall in April. He was also a member of the planning committee.



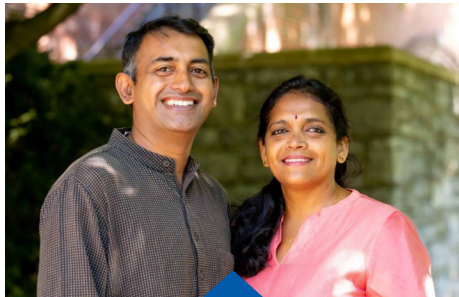
Professor **Stefano Colafranceschi**, an affiliate with CERN (European Organization for Nuclear Research), has started an internship at EMU with the organization.



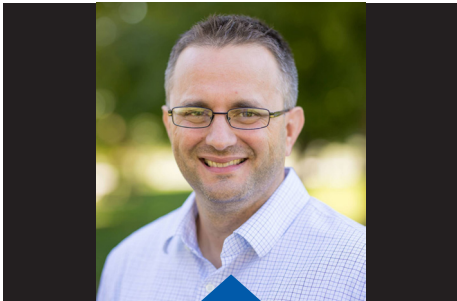
John Sibole, director of EMU Lancaster's aviation program, earned the Wright Brothers Master Pilot Award.



Marti Eads, professor of language and literature, was selected as a mentor in the Lilly Graduate Fellows Program, which supports academically-talented graduate students exploring vocations in church-related higher education.



Ashok Gladstone Xavier and **Florina Xavier**, both MA '04 graduates of the Center for Justice and Peacebuilding, returned to EMU as Fulbright Scholar in Residence (social work) and peacebuilding practitioner, respectively.



Zach Yoder, assistant provost for student success, led development, implementation, and staffing of a new first-year advisors program, beginning in fall 2022.



Deb Cardenas, an instructor in the nursing department, is president of the Pennsylvania Nurses Association.



Chad Gusler, professor of English, was awarded the Tobias Wolff Award in Fiction.



STAFF AWARDS

Recipients of the 2021-22 EMU Royal Award were Barb Byers, administrative assistant; Diane Farrar, office coordinator in the Suter Science Center; Lori Gant, administrative assistant, Facilities Management; Luke Litwiller, senior admissions counselor; Stephanie Mason, administrative assistant; Julie Siegfried, interim executive director and director of operations, EMU Lancaster.



20+

SCHOLARLY WORKS

Faculty published, edited, or co-edited more than 20 books and essays in peer-reviewed journals along with numerous other creative works.

EMU
EXCELLENCE
IN TEACHING

AWARDS

Tenured Faculty



RON SHULTZ, PHD
Associate Professor of
Teacher Education

Pre-Tenure Faculty



**MARIA ESTHER
SHOWALTER**
Program Director,
Language and Literature

Adjunct Instructor



BONNIE FISHER
Instructor, Psychology

GRANTS

\$998K LILLY FOUNDATION, INC.

Eastern Mennonite Seminary

The Pathways to Tomorrow grant supports development of a new interdisciplinary pastoral leadership institute that will offer programming on conflict transformation.

\$180K SILICON VALLEY COMMUNITY FOUNDATION

Zehr Institute for Restorative Justice/Center for Justice and Peacebuilding

To strengthen organizational infrastructure and provide support for media, communications, web presence, and fundraising.

\$300K NATIONAL SCIENCE FOUNDATION

Multidisciplinary Australian Research Collaboration for Biosecurity Initiative

To support three years of research opportunities for 18 (six each year) area university students in Australia.

OTHER GRANTS (new and in progress)

Arts Council of the Valley, GoVirginia, In Trust Center, Justpax, US Department of Agriculture, US Department of Justice, US Health Resources and Services Administration, Marpeck Deans, VIVA Open Grants, Wabash Center.

VALIDATION OF EXCELLENCE

Money Magazine



**AMONG VIRGINIA PRIVATE
FOUR-YEAR COLLEGES**

Money 2022's Best Colleges list

AcademicInfluence.com



ACADEMIC STEWARDSHIP

a national ranking gauging how wisely
schools are stewarding their resources

Washington Monthly



**CONTRIBUTION TO
THE PUBLIC GOOD**

among Virginia universities overall



**NUMBER OF GRADUATES WHO
COMPLETE DOCTORATE**

second among Virginia master's
universities and 34th in the nation



**PERCENT OF GRADS WITH
SERVICE-ORIENTED MAJORS**

second among Virginia master's
universities and 57th in the nation

U.S. News & World Report



**BEST UNIVERSITIES
IN THE SOUTH**

Also achieved ranking for Best Value
and Social Mobility

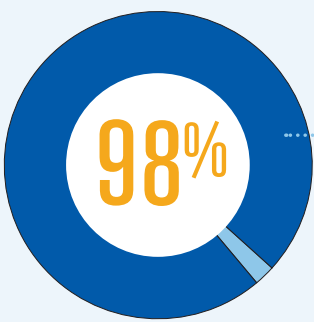
VirginiaNursingAssociation



**BEST ONLINE RN-BSN
PROGRAM IN VIRGINIA**

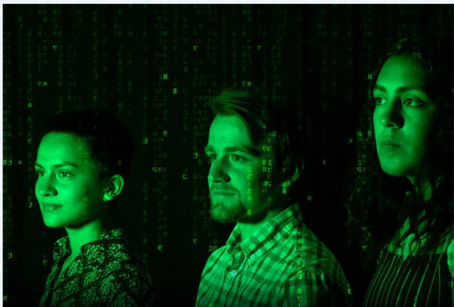


students named to
ODAC All-Academic
Team



98% of job-seeking
graduates employed
after one year

EMU defeated 77 teams in the international
Kryptos codebreaking competition, the third
first-place finish in five years.



International superstars The String Queens joined
EMU ensembles for the November 2021 Gala.



Alijah Johnson earned All-American honors with
his eighth place finish in the 200m at the 2022
NCAA Outdoor National Championships.



EMU Lancaster's first aviation program gradu-
ates are employed as charter pilots and flight
instructors.



The opera production "Noye's Fludde" won
several Kennedy Center American College
Theater Festival accolades, including a candidacy
to be an "Invited Production" at the KCACTF
Region 2 Festival in 2023.



The Baseball team was named an Academic
Program of Excellence by the American Baseball
Association.

DIVERSITY, EQUITY, AND INCLUSION



“ This year has been one of many inaugural events. We are determined to continue to reimagine EMU and work side by side with our community to create the campus we all aspire to have. As a faith-based academic institution, we have a moral duty to prepare global leaders who advance diversity, equity, inclusion, and a sense of belonging wherever they go. We are on this journey together.

Jacqueline N. Font-Guzmán PhD
Vice President for Diversity, Equity, and Inclusion



UNDERGRAD. STUDENT DIVERSITY



BOARD OF TRUSTEES DIVERSITY



ON-CAMPUS PROJECTS FUNDED BY DEI GRANTS



CO-LEADERS FROM AMONG FACULTY, STAFF AND STUDENTS



\$328,938 donated by alumni and friends to DEI initiative (cumulative total)

EMU sponsors a series of events to celebrate Indigenous Peoples' Day.

An inaugural LGBTQ+ History Month celebration featured author, activist, and public historian Dr. Gregory Samantha Rosenthal.

Cabinet and Board of Trustees approves the university's Land Acknowledgement statement.



“Anne and Emmett” was produced as part of MLK Celebration weekend by a cast of student and community members with support from an Arts Council of the Valley grant. The play and talkback panel discussion highlighted issues of religious and racial conflict.

The first cycle of DEI Grants is launched to cultivate a culture of belonging through embracing diversity and inclusivity, thanks to the generosity of Jose Koshy '76 and Jean Koshy-Hertzler '79. The first grant completed was an art exhibit “Restoring Queer Pasts, Envisioning Queer Futures” open from April 29-May 9.



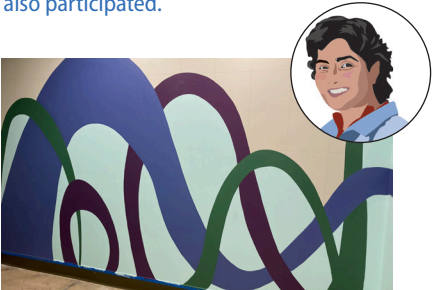
The first Lavender Graduation Ceremony celebrates the accomplishments of self-identifying LGBTQ+ undergraduate and graduate students. This was the first such ceremony among Mennonite colleges and universities in North America.

The seventh annual Donning of the Kente ceremony celebrates graduates, their heritage and honored mentors.



About 100 Lancaster Mennonite High School employees participated in a 10-hour DEI workshop on workplace conflict engagement. The curriculum was developed and facilitated in collaboration with EMU Lancaster staff, who also participated.

Planning begins for an “Inclusivity in Science” mural in the Suter Science Center, funded by an Inclusive Excellence grant. Astrophysicist Nergis Mavalvala is among those selected by a community survey.



SEPT 2021

OCT 2021

NOV 2021

DEC 2021

JAN 2022

FEB 2022

MAR 2022

APR 2022

MAY 2022

JUN 2022

JUL 2022

AUG 2022

ENROLLMENT



25%

Percentage of EMU students who are first in their family to attend college



78

Number of degrees and certificates offered, across all divisions



31+28
US STATES COUNTRIES

EMU students represent 31 states and 28 countries



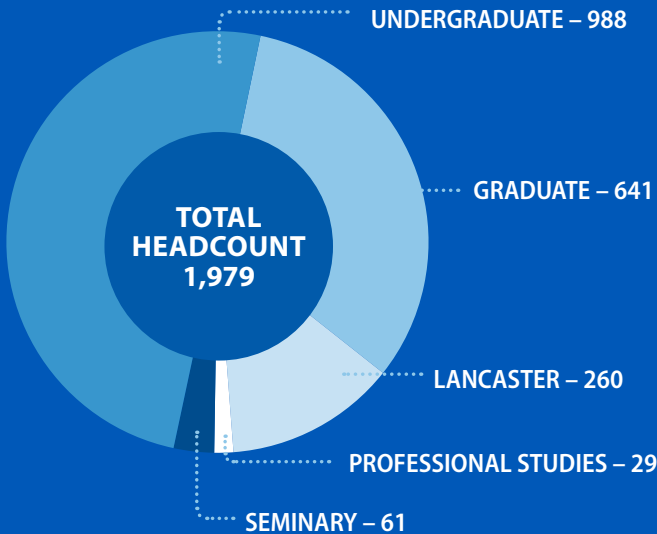
Mary Krahn Jensen, former associate provost of EMU Lancaster, began her new role as vice president for enrollment and strategic growth in December 2021.

“ In Enrollment Management, there’s been a whirlwind of change: We have prioritized the creation of new structures, leadership, spaces, and cultures to nurture our employees, our greatest asset, to their full potential. We onboarded new directors of undergraduate admissions and enrollment operations, and began successful searches for new directors of athletics, graduate admissions and marketing and communications. Our new workspaces, including the sleek new centralized Admissions space in University Commons, support efficiencies and show true investment in our staff’s potential to attract growing numbers of students who want to learn from our mission and values.

Mary Krahn Jensen
Vice president for enrollment and strategic growth

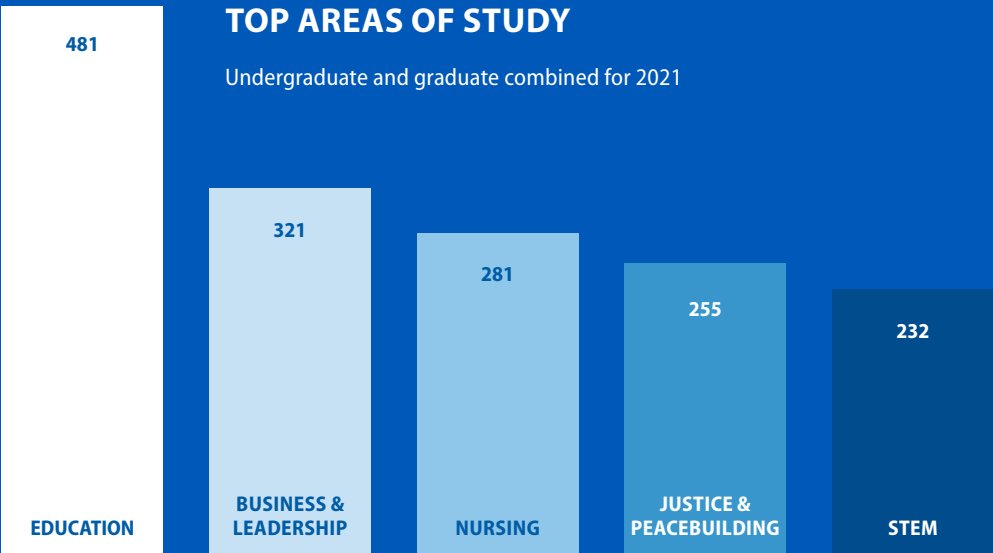
12-MONTH ENROLLMENT

12-month enrollment captures the total number of students who take classes at EMU during a 12-month period. It is a more comprehensive picture of the university’s activities than the more traditional fall enrollment statistics.



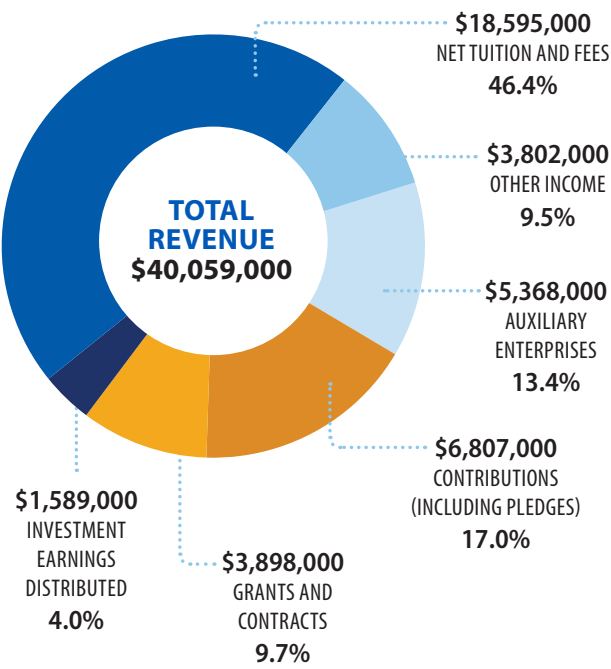
TOP AREAS OF STUDY

Undergraduate and graduate combined for 2021

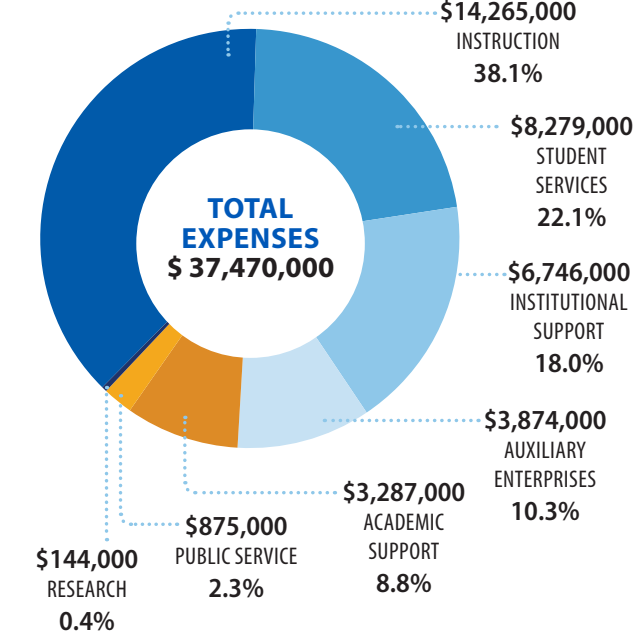


FINANCIALS

REVENUE SOURCES

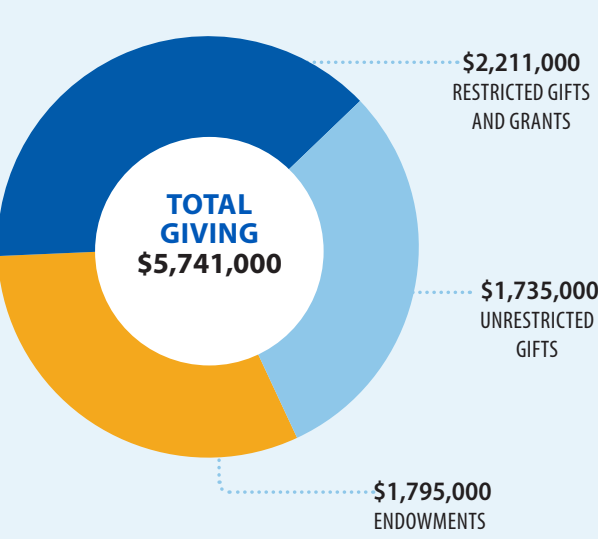


OPERATING EXPENSES

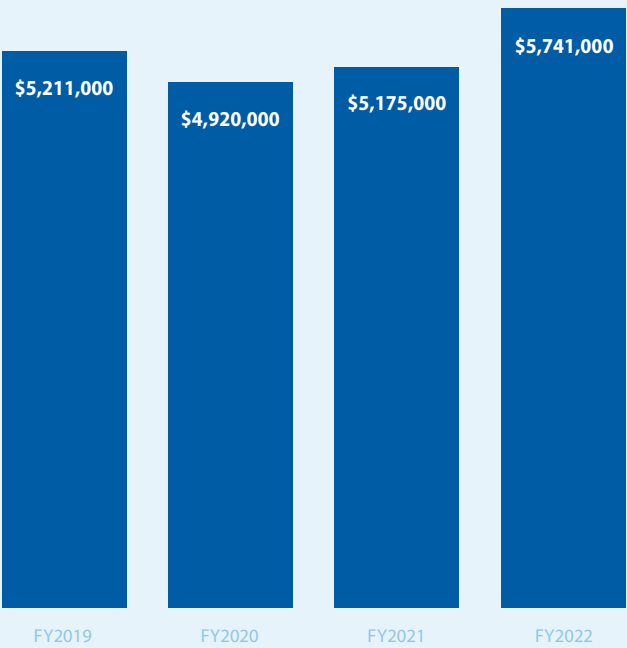


ADVANCEMENT

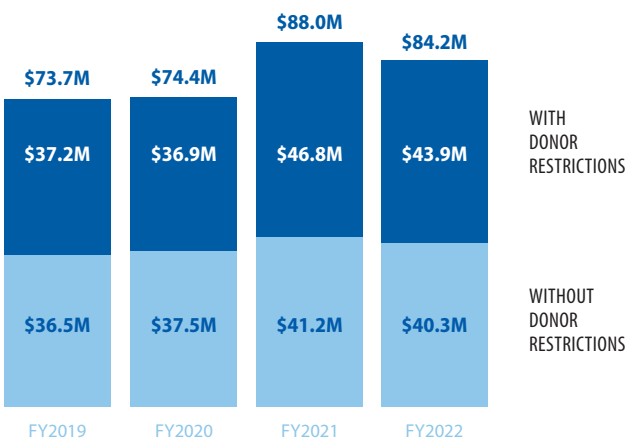
OVERALL CONTRIBUTIONS



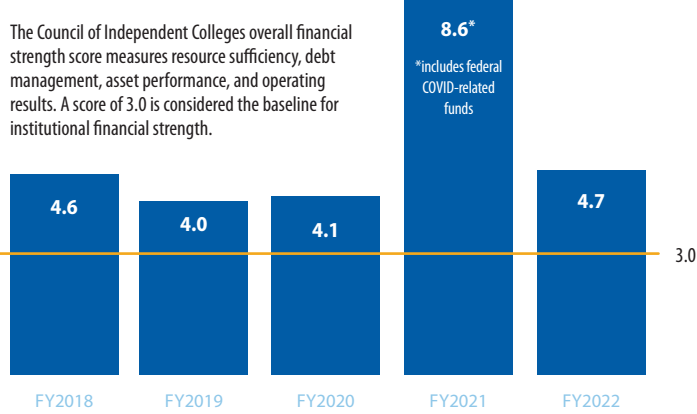
TOTAL GIVING BY YEAR



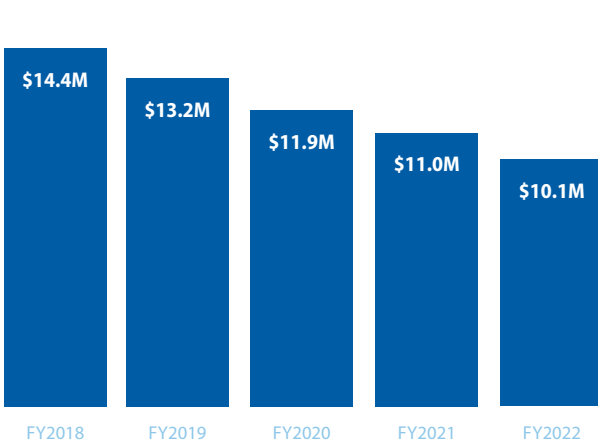
NET ASSETS



OVERALL FINANCIAL STRENGTH SCORE



LONG-TERM DEBT



TOTAL GIFTS: 1,366
TOTAL GIVING: \$295,248
UNLOCKED GIVING CHALLENGES: 9 OF 10



FORWARD TOGETHER

The Campaign for EMU in Unprecedented Times

THE LARGEST
COMPREHENSIVE
CAMPAIGN IN EMU
HISTORY

\$10.7
MILLION

PHASE I

Three-year goal to support university resilience and student access through a tuition relief fund, current direct grant scholarships, and long-term endowed scholarships.

NEW ENDOWED SCHOLARSHIPS
RAISED: \$2.9 MILLION – GOAL: \$3 MILLION

THE DIVERSITY, EQUITY AND INCLUSION FUND
RAISED: 329,000 – GOAL: 300,000

THE STUDENT TUITION RELIEF FUND
RAISED: 482,000 – GOAL: \$1 MILLION

THE UNIVERSITY FUND FOR RESILIENCE
RAISED: \$3.5 MILLION – GOAL: \$5.4 MILLION

IMMEDIATE DIRECT GRANT SCHOLARSHIPS
RAISED: \$1 MILLION – GOAL: \$1 MILLION

PHASE II

EMU's new Strategic Plan 2023-28, now in development, will result in:

- Capital investment opportunities
- Strategic programming investment opportunities
- Continued emphasis on immediate and endowed scholarships
- Continued attention to University Fund growth



AHEAD OF TARGET

*As of June 30, 2022



\$4.4M OF \$5M GOAL
FOR STUDENT TUITION RELIEF*

STUDENT TUITION RELIEF

UP 11%



UP 11% IN TOTAL
PHILANTHROPIC SUPPORT*

INCREASE IN GIVING

\$11M+



MORE THAN \$11 MILLION OF
NEW ESTATE COMMITMENTS*

ESTATE COMMITMENTS



New Track and Field Complex Campaign In Progress

\$6M

CAMPAIGN
GOAL

\$3.3M

2022 YEAR-END
GOAL

\$2.4M

RAISED AS
OF JUNE 2022

JUNE
2023

GROUND-
BREAKING

- Contributing to enrollment growth
- Sustaining commitments to diversity, equity and inclusion
- Providing a quality student-athlete experience

ADVANCEMENT HIGHLIGHTS



HONORING LEGACIES

(From left) Jose Koshy, class of '76, and Jean Koshy-Hertzler '79 with Jean's father John Asa Hertzler and Debbie and David Stoltzfus, children of the late Robert and Rachel Stoltzfus, in the Hall of Nations, November 2021. The gathering celebrated two gifts from the Koshy family to support diversity, equity, and inclusion initiatives in honor of John Asa and the late Rebecca Hertzler, and a new endowed scholarship for international students in honor of Robert and Rachel Stoltzfus. (Photo by Rachel Holderman)

TOP FUNDRAISERS

(From left) J.B. Miller, Bob Brenneman, Marian Driver Hackney, Gloria Horst Rosenberger and Bob Bishop, members of the Class of '70 reunion planning committee, at EMU's Community Bell over Homecoming weekend. Their class raised \$1 million for student scholarships. (Photo by Rachel Holderman)



NEW RECORD

LovEMU Giving Day 2022 was another record-setting event – with \$295,173 raised from 1,363 gifts, a gain in more than \$14,500 and 346 new gifts over last year's totals




THANK YOU TO OUR VISIONARY TRUSTEES!

BOARD OF TRUSTEES 2021-2022

Manuel (Manny) A. Nuñez '94, Devon, Pa., Chair
Diann Bailey, Granby, Conn.
Evon Bergey '79, Lancaster, Pa.
Herman Bontrager '72, Lititz, Pa.
Randall Bowman '78, Harrisonburg, Va.
Gloria Y. Diener '76, Harrisonburg, Va.
Hans Harman '02, McGaheysville, Va.
Lisa Heavener '07, Doylestown, Pa.
Louise Otto Hostetter '79, Harrisonburg, Va.
Beny Krisbianto MDiv '15, South Philadelphia, Pa.
Stephen Kriss '94, Philadelphia, Pa.
Chad Lacher '98, Souderton, Pa.
Kevin Longenecker '91, Harrisonburg, Va.

J.B. Miller '70, Sarasota, Fla.
Cedric Moore '97, Henrico, Va.
Glenna Ramer '77, Ooltewah, Tenn.
Shawn Ramer '83, Conestoga, Pa.
Deanna Reed, Harrisonburg, Va.
Eloy Rodriguez '03, New Providence, Pa.
James Rosenberger '68, State College, Pa.
Rajarshi Roy, Takoma Park, Md.
Pam Tieszen, Lancaster, Pa.
Vaughn Troyer '93, Millersburg, Ohio
Anne Kaufman Weaver '88, MDiv '16, Brownstown, Pa.
Michael Danner, Mennonite Education Agency rep.

*Running the good race
for our time!*

A vibrant stained glass window featuring abstract, flowing lines and a rich palette of blues, purples, greens, and yellows. The design is composed of numerous overlapping, organic shapes that create a sense of movement and depth, reminiscent of stylized leaves or a dynamic, swirling pattern. The background is a mix of these colors, with the foreground elements in sharper focus.

*Let us run with
perseverance the
race marked out
for us fixing our
eyes on Jesus.*

HEBREWS 12:1-2

Stained glass window
from Eastern Mennonite
Seminary, Martin Chapel

TOGETHER, we can make a DIFFERENCE.

GIVE TODAY – emu.edu/giving