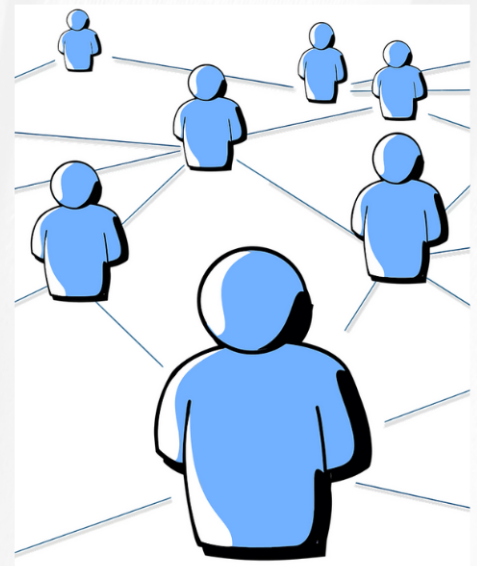




Continuing Studies Seminar in Family and Congregational Systems

Applying Bowen Family Systems Theory in the arenas of
family, faith, community, and society

Synchronous online, October 2023 - May 2024



OBJECTIVES

Bowen Family Systems Theory has attracted people from a wide range of specialties, both religious and secular. The religious community utilizes family systems theory in the disciplines of pastoral care and counseling, organizational leadership, and Biblical and theological interpretation. Even more people have found it integral to becoming the kind of person they want to be: specifically for Christians, in living out the gospel in their relationships. These persons find that ongoing engagement with the framework propels learning that becomes increasingly transformative.

PROGRAM

The Continuing Studies Seminar is intended for those with some acquaintance with Bowen Theory who wish to deepen their learning. The program includes:

- monthly topical Zoom lectures and discussion
- monthly facilitated group discussion & participant presentations
- monthly individual coaching/consultation sessions
- Readings, video recordings, & writing prompts to integrate learning with practice

FOCUS TOPICS

- Family Emotional Process and the Self
- Nuclear Family Emotional System
- The (not so) Simple Emotional Triangle
- Family Projection Process and Sibling Position
- The Multigenerational Transmission Process
- Subtle Layers of Distance and Cutoff
- The Process of Differentiation of Self
- Bowen Theory, Faith, and Functioning

TUITION

Thanks to the generous support of the Lilly Foundation's Thriving in Ministry Grant, students' reduced rate is only **\$360** (70% discount of full \$1200 cost).

APPLICATION

Please direct questions and application requests to Dr. Kenton Derstine, (derstine@emu.edu) or visit [emu.edu/seminary/continuing-ed](https://www.emu.edu/seminary/continuing-ed)

MORE INFO



Kenton T. Derstine, D.Min.
Program Director



Penny Driediger, ACPE
Certified Educator



Janis Norton, LCSW